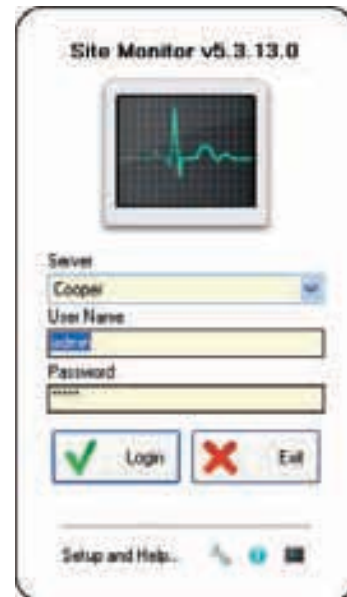


## Site Monitor Software / Webservice



Site Monitor / Webservice Software



### Overview

Site monitor / webservice software is designed to monitor Cooper fire systems and allow quick PC based administration.

Using a simple interface, authorized users can view control panel event history, event status, device properties and other information depending on access permissions defined by the system administrator.

The site monitor / webservice software continually monitors network activity and records every event in detail. This information can then be processed and generated into HTML reports or used to trigger automated email notifications.

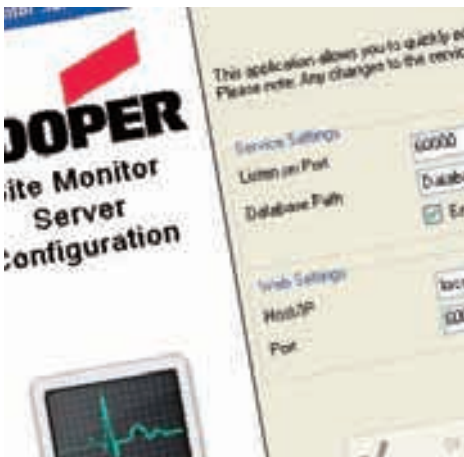
To extend the benefits of PC based access, the site monitor / webservice software is also designed to work remotely and can be accessed through the desktop client software or a web browser. This ensures that where ever you are, you can always quickly connect and perform vital administration. Additionally, the software also supports multiple users, of which each can be assigned a particular role. This means non-technical staff can use the software to overview the system state, while technicians can log in and manage any issues.

### Features

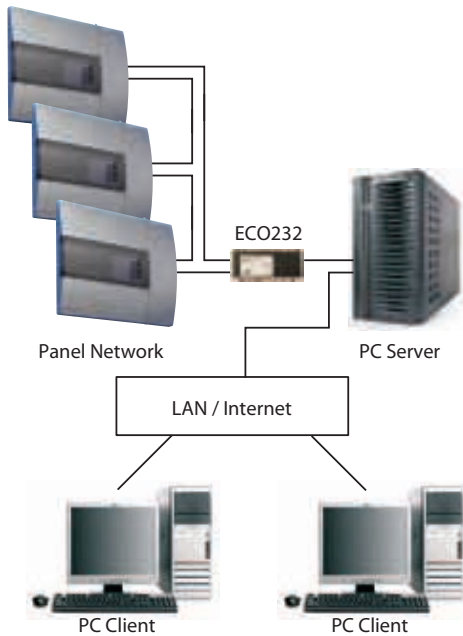
- Monitor multiple networks
- Network event log and event reports
- View any networked panel, loop, zone or device
- Up to date device status
- Panel/device administration
- Setup automated email notifications
- Full remote access via client software or a web browser
- License controlled client software to enforce security
- Built in password security
- Restrict user access to view only, technicians and administrators
- Supports up to 1000 users

### Benefits

- Remote system interrogation
- Improved maintenance efficiency and planning



## Typical System Architecture



## Technical Specification

Description	Site Monitor / Webserver Software
Panels per Network	126
Networks	50
Loops per Panel	250
Zones per Network	250
Max Events	9,999
Max Conditions per Event	100
Max Actions per Event	100
Max Users	1000
User Access Levels	4
Max Connections	200
Site Installer	
Database Format Version	2.0 or Above
Max History Log Size	4 GB
Supported Network Protocols	DF6000NetworkV1
Supported Panels	Cooper Intelligent Addressable Panels
Report File Format	HTML
Email Notification Protocol	SMTP
Remote Protocol	TCP/IP
Web Interface Technologies / Protocols	ASP.Net 2.0, XHTML, CSS 2.0, JavaScript

## System Requirements

Hardware Requirements	Intel Pentium or equivalent 2 GHz or better 1GB memory, 100MB free disc space 1 RS232 serial port or USB port with serial adapter, 100/1000 Mps LAN port or wireless LAN card.
Platform	Windows 2000 SP 4 Windows 2003 Windows XP SP2 Windows Vista Windows 7
Display	High resolution 1024x768 hi-colour or True-colour display with 32,768 or 16 million colours
Software Libraries	Microsoft .Net 2.0 SP2 Microsoft SQL Server Compact 3.5 SP1
Remote Access (Server)	1 Open TCP/IP Port
Web Access (Server)	ASP.Net 2.0 Enabled Web Server
Web Access (Client/Browser)	CSS 2.0, JavaScript. Supported browsers include: Internet Explorer 5.5+ Mozilla Firefox 3.5+ Opera 10.0+ Safari 4.0+
Automated Email Events	SMTP server

## Product Codes

Code	Description
SITEMONITOR	Site Monitor / Webserver Software